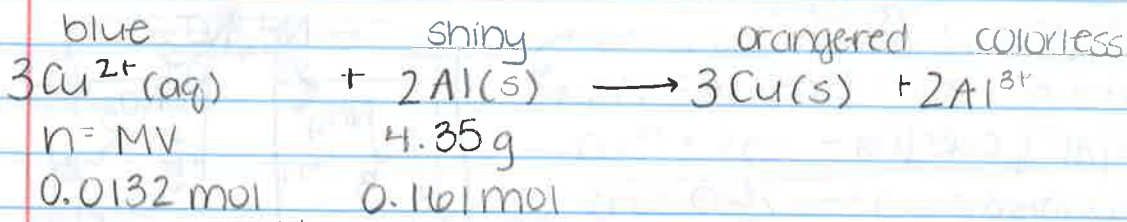


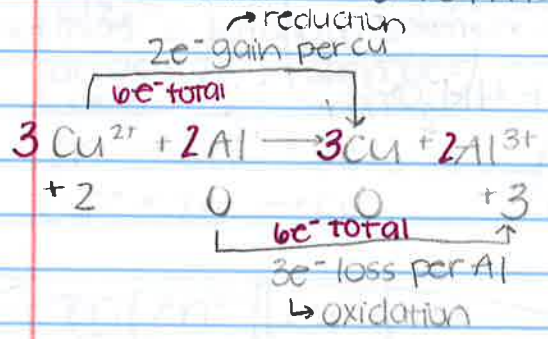
Unit 4:

5 April 2019



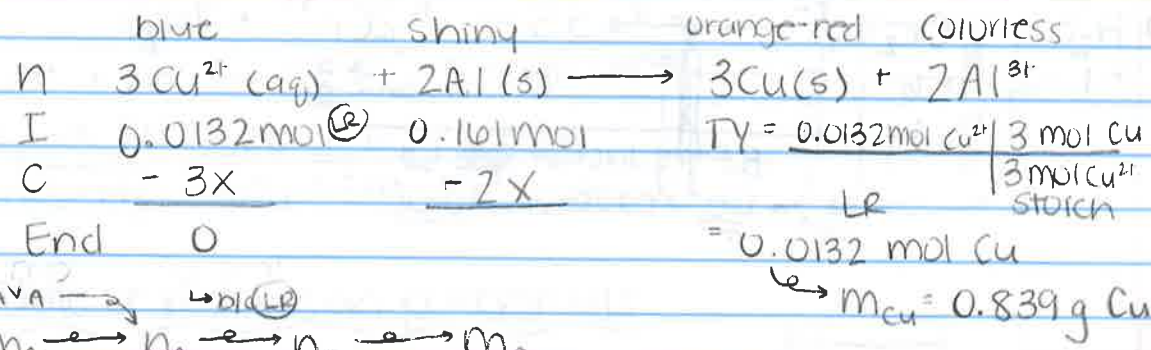
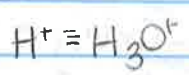
DIL RIG

LCM

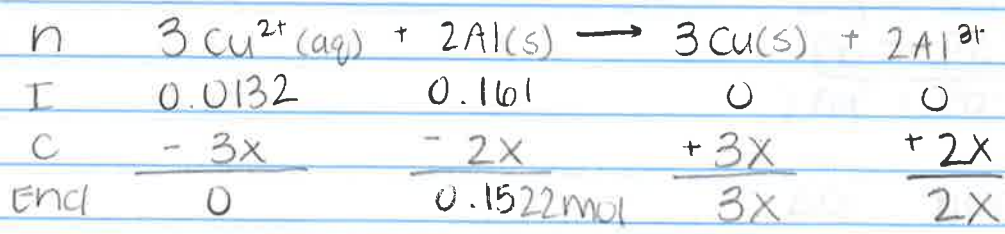
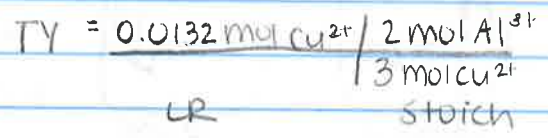
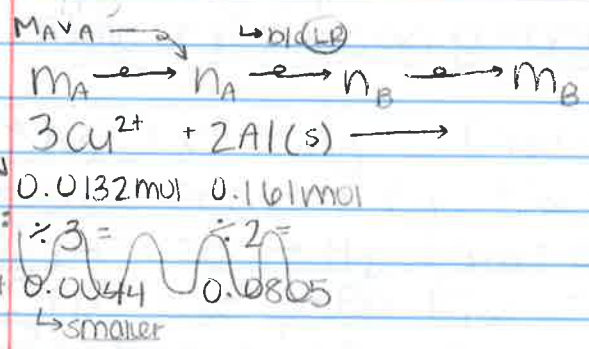


elements by themselves

- Balancing a redox:  $\checkmark$  ions = same as charge
- assign oxidation numbers
  - link up oxidation half link up reduction half
  - use LCM to balance the two halves
  - Balance O with  $\text{H}_2\text{O}$  and then H with  $\text{H}^+$
  - stray dogs



\*LR\*  
 Limiting reagent = coeff #  
 LR = smallest value



$0.0132 - 3X = 0$   
 $X = \frac{0.0132}{3} = 0.0044$   
 4.11 g Al  
 left over

